

SCOTTMORIA APILINGUA AND *S. FELIX-MANGINGII*: TWO NEW SPECIES OF LECYTHIDACEAE FROM ECUADOR

XAVIER CORNEJO¹ AND GHILLEAN T. PRANCE^{1,2}

Abstract: Two new species of Neotropical Lecythidaceae from Ecuador are formally described and presented here: *Scottmoria apilingua* from wet forests of western Ecuador, and *S. felix-mangingii* from Amazonian forests in northeastern Ecuador. The new species are illustrated and compared to morphologically similar species.

Keywords: Ecuador, Eschweilera, Neotropics

Resumen: Se describe y presenta formalmente a dos nuevas especies de Lecythidaceae neotropicales de Ecuador: *Scottmoria apilingua* de los bosques húmedos del occidente de Ecuador, y *S. felix-mangingii* de los bosques amazónicos del noreste de Ecuador. Las nuevas especies son ilustradas y se discute sus relaciones con las especies morfológicamente cercanas.

Palabras claves: Ecuador, Eschweilera, neotrópicos

Scottmoria Cornejo in Vargas et al. (2024) is a monophyletic genus of Lecythidaceae that includes 42 species (including the two presented here), most of which are hardwood trees and a few are shrubs that occur in well-drained soils in moist and wet forests to rainforests. It is the only genus of this family that has the combination of flowers with an androecial hood with three or four coils, seeds surrounded by a spreading white sarcotesta, at least when young, and funicular lateral arils of half I beam or L shape and rubber-like texture, or seeds covered by a white rubbery coat, making it easy to identify in the field when there are flowers and/or fruits. The genus is centered in western Ecuador and Colombia on the Pacific side of northwestern South America and is distributed northwards to Honduras in Mesoamerica, with just five species in western Amazonia up to the eastern Andean slopes (Cornejo and Prance, 2025). Recent studies of Lecythidaceae have produced 12 new species of *Scottmoria* for northwestern South America and Panama (Cornejo, 2023a, 2023b; Batista, 2024; Cornejo and Prance, 2024, 2025, submitted). In this paper, two new species of *Scottmoria* from each side of the Andes in Ecuador are formally presented.

MATERIALS AND METHODS

All relevant specimens in the AAU, B, GB, COL, GUAY, K, LOJA, MO, NY, QCA, QCNE, and US herbaria were studied (acronyms follow Thiers, 2025). Measurements are from herbarium specimens and rehydrated material. The botanical terms used in the species descriptions follow

Jackson (1991) and Mori et al. (2015). The preliminary conservation status was determined using the coordinates of the studied specimens, GeoCAT (Bachman and Moat, 2012; <http://geocat.kew.org>), and a buffer area of 2 × 2 km, as recommended by the IUCN (2022).

TAXONOMY

1. *Scottmoria apilingua* Cornejo, sp. nov. TYPE: ECUADOR. Los Ríos: Heda. Clementina, Cerro Samama, bosque muy húmedo premontano, secundario en recuperación, 1°40'S, 79°21'W, 500–600 m, 4 Apr 1996 (fl, fr), X. Cornejo, C. Cornejo & C. Bonifaz 4928 (Holotype: NY-01096752; Isotypes: AAU, GUAY-7924, K). Fig. 1, 3.

New species of *Scottmoria*, similar to *S. rimbachii* (Standl.) Cornejo (2024, p. 175; Vargas et al., 2024); however, *S. apilingua* differs by its smaller size, from shrubs 2 m tall to trees up to 10 m tall (vs. trees 8–30 m tall), leaf blades with a linear-caudate apex, 2–7 cm long (vs. leaf blades with an acuminate apex, up to 2.5 cm long), inflorescences ramiflorous, consistently short, up to 8 cm long (vs. inflorescences usually cauline, elongate, most 8–50 cm long), flowers with calyx lobes often ciliolate (vs. calyx lobes glabrous), and the presence of a stylar collar (vs. stylar collar absent). *Scottmoria apilingua* also resembles *S. caudiculata*, (R. Knuth) Cornejo (2024, p. 174; Vargas et al., 2024), a species that occurs from Colombia to Amazonian Ecuador, but *S. apilingua* can be distinguished from *S. caudiculata* by the conspicuous larger size of the leaf blades (30–60 cm long vs. 13–27 cm long), longer

¹ Herbario GUAY, Departamento de Botánica, Facultad de Ciencias Naturales, Universidad de Guayaquil, Av. Raúl Gómez Lince s.n. y Av. Juan Tanca Marengo (campus Mapasingue), Guayaquil, Ecuador. xcornejoguay@gmail.com; <https://orcid.org/0000-0002-4081-4047>

² Herbarium, Royal Botanic Gardens, Kew, Richmond, Surrey, TW9 3AB, UK. siriain01@yahoo.co.uk; <https://orcid.org/0000-0002-5999-3591>

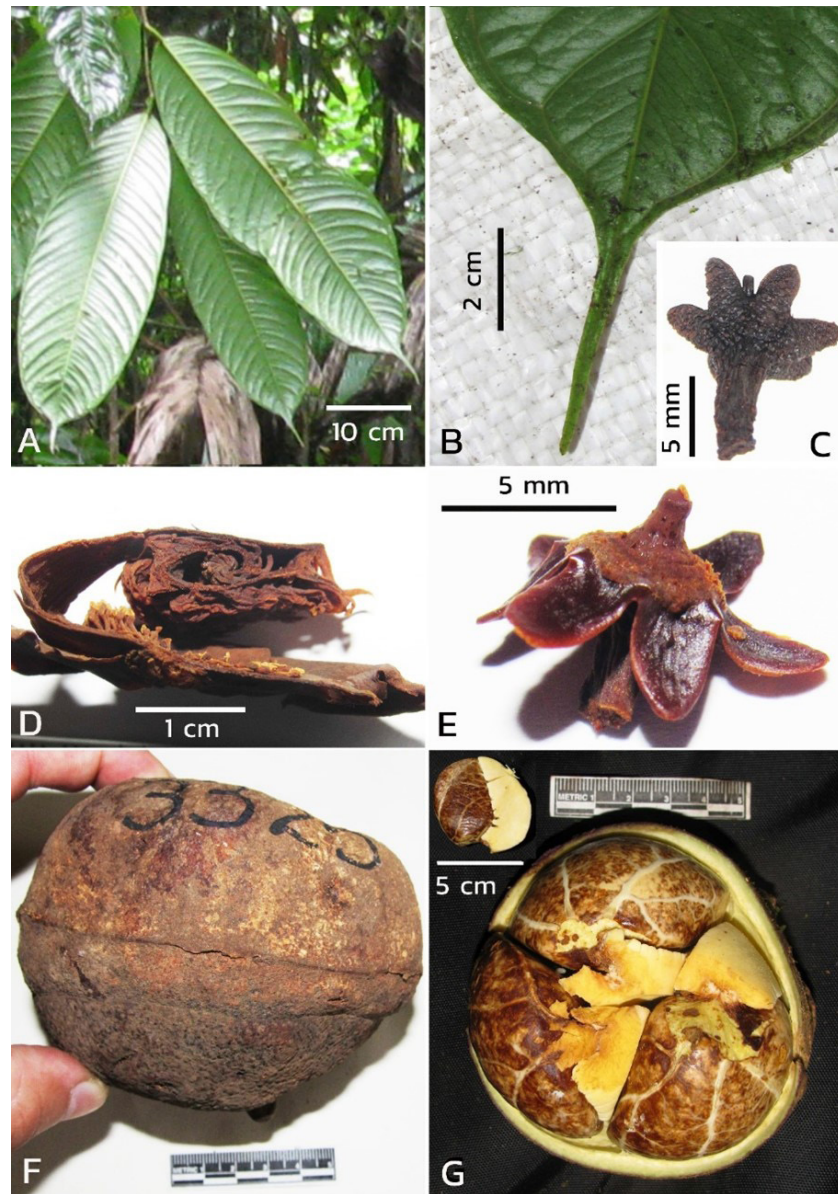


FIGURE 1: *Scottmoria apilingua* Cornejo. A, Leaves, abaxial view; B, linear-caudate leaf apex, adaxial view; C, calyx and pedicel, lateral-abaxial view, rehydrated from herbarium material; D, sectioned androecium displaying a triple coil, rehydrated from herbarium material; E, calyx and pistil, lateral view, rehydrated from herbarium material; F, dried fruit, lateral view; G, transversely sectioned fresh mature fruit exhibiting three seeds and yellow arils, abaxial view, and a removed mature seed with a lateral aril at upper left corner. A, B, G are based on *Cornejo 8185* (GUAY); C is based on *Cornejo et al. 4928* (GUAY, the type); D–E are based on *Palacios 16847* (QCNE); F is based on *Bonifaz & Cornejo 3325* (GUAY). Photographs by X. Cornejo.

petioles (12–28 mm long vs. 5–13 mm long), consistently shorter inflorescences (up to 8 cm long vs. up to 20 cm long), androecium with the second and third coils perpendicular to the pedicel (vs. androecium with the second and third coils parallel to pedicel), and the presence of a styler collar (vs. styler collar absent).

Shrub 2 m tall to *tree* up to 8 m tall and ca. 10 cm in diameter at breast height (DBH), the bark and trunk unknown. *Stems* glabrous, lenticellate, the lenticels circular to elliptic. *Leaves* petiolate, the petioles flat to shallowly

channeled adaxially, rounded abaxially, hemispherical in cross section, 12–28 mm long \times 2.5–5 mm diam., glabrous; blades oblong-elliptic to narrowly-elliptic, 30–60 \times (8–)9–18 cm, thinly chartaceous, with abundant dark punctations abaxially, the base broadly cuneate to broadly obtuse or rounded, the margins entire, marginal glands present in young leaves, becoming inconspicuous dark brown dots in mature leaves, the apex linear-caudate, 2–7 cm; venation apparently eucamptodromous toward the base and brochidodromous toward the apex, the midrib sulcate adaxially, salient

abaxially, glabrous, the secondary veins in 17–25 pairs, impressed to prominulous adaxially, salient abaxially, the tertiary veins reticulate. *Inflorescences* ramiflorous, a short raceme below the leaves, the rachis 2–8 cm long \times 1–2.5 mm thick in the lower half, straight to slightly flexuose, lenticellate, glabrous; pedicel/hypanthium 5–12 \times 2–3 mm, richly verruculose-lenticellate, glabrous, blackish (dry); floral bracts shortly oblong, ca. 2 mm long, early deciduous; flower buds purple (fresh). *Flowers* 5–6 cm diam. (fresh), ca. 3–4 cm diam. (dry); calyx with six lobes, the lobes triangular to deltoid, 2.5–4 \times 2–3.5 mm, broadly divergent to patent at anthesis, verruculose-lenticellate abaxially, sometimes keeled, the margins often shortly pilose, the bases valvate, arising from fused calyx rim; petals obovate, or oblongoid to broadly ovate, 2–4 \times 1–2 cm, magenta or red-wine to dark purple, and white at base; androecial hood with three coils, 1.3–2.5 cm across, purple to pinkish-white (fresh), inner cleft present; vestigial stamens on the outside of the coils; staminal ring with 200–250 stamens, the filaments 1–1.5 mm long (fresh), clavate, the anthers 0.5–0.7 mm long (fresh); hypanthium glabrous, verruculose-lenticellate, truncate at summit, abruptly narrowing onto pedicel at base, ca. 2 mm long; the ovary summit protruding over hypanthium, ca. 1 mm high, surrounded by a shallow circular depression between the intra-staminal ring scar and summit of ovary; the style 1–3 mm long, distinguished from the summit of the ovary, stylar collar present, the stigma pore transverse. *Fruits* depressed sub-globose to oblate, 5.5–10 \times 6–12 cm, the calyx lobes minute, upwards to patent, inconspicuous in sub-woody fruits at maturity, the infra-calycine zone one-fourth to half of length of fruit, broadly convex from calycine ring to pedicel, the supra-calycine zone 1–2.5 cm wide, straight to ascending, the operculum occupying one third to two thirds of fruit length, broadly convex, with a nipple-like umbo, apical pore present, the pericarp brown when dry, 3–4 mm thick. *Seeds* 3–6 per fruit, dark brown and glossy at maturity, more or less wedge-shaped in cross section, the outer surface hemispherical, the two sides flat, 2.5–5 \times 2–4 cm, the veins conspicuous on the surface of fresh seeds, the testa smooth, the lateral aril of the I-beam type, thick, yellowish-cream, the thin sarcotesta white, absorbed at maturity.

Scottmoria apilingua can be recognized in the field by the combination of the shrubby to short tree habit (2 to 8 m tall), large leaves, 30–60 \times (8–)9–18 cm, a leaf apex linear-caudate, 2–7 cm long, and ramiflorous, unbranched short racemes, up to 8 cm long, with floral bracts present at anthesis. *Scottmoria apilingua* resembles *S. rimbachii*, a species restricted to western Ecuador, but the new species differs from the latter by the characters discussed in the diagnosis. *Scottmoria apilingua* has been previously regarded in a broad sense as *S. caudiculata* (Mori et al.,

2015); however, molecular work has demonstrated that *S. apilingua* belongs to a closely related but distinct genetic lineage (Vargas et al., 2024, Fig. 1B, cited as LA03 based on the paratype *X. Cornejo 8185*, from the same type locality); for morphological differences see the diagnosis.

Etymology: The epithet “apilingua” is derived from “apis,” bee, and “lingua,” tongue, alluding to the linear-caudate leaf apex (reaching up to 7 cm in length, which characterize this species) often resembling the linear tongue of a bee.

Common names: Garrapato (Spanish, meaning “male tick,” because in the field the flowers of *S. apilingua* resemble the body outline and red-purple color of local ticks), flor morada (Spanish, meaning “purple flower,” both local names fide *Cornejo et al. 4928*, the type); tete (*Beck et al. 3078*, from the Awá native language, this vernacular name is commonly applied to several species of *Scottmoria* in NW Ecuador).

Habitat and distribution: *Scottmoria apilingua* occurs as an understory woody element “always a small tree” (as recorded in *Gentry & Josse 72851*, QCNE; obs. pers. in the field), in conserved and secondary wet forests and rainforests, from lowlands to lower montane Andean forests, between 250 and 1400 m, in central and northwestern Ecuador.

Phenology: Flowers have been recorded from September to April, and in July, and fruits from September to May.

Conservation status: *Scottmoria apilingua* inhabits fragments of forests within an area of less than 5000 km² in western Ecuador that is under pressure from logging, steady deforestation, and increasing forest fragmentation. Therefore, the EN B1 B2abiii category is preliminarily assigned to this new species (IUCN, 2022).

Additional Specimens Examined: ECUADOR Carchi: Awá indigenous territory, community of Baboso, road to the ravine El Mar, 0°55'N, 78°25'W, 1080 m, 11 Apr 1995 (fl), *H.T. Beck, E. Loachamin, P. Ortiz, J. Pascal & J. Pascal 3078* (NY). Tulcán, Parroquia Tobar Donoso, orillas del río Mira, 1°11'13"N, 78°29'45"W, 254 m, *E. Freire & R. Quillupangui 8934* (QCNE). Pichincha: Reserva Forestal ENDESA, Río Silanche, km 113 de la carretera Quito-Puerto Quito, faldas occidentales, a 10 km al norte de la carretera principal, 0°05'N, 79°02'W, 650–700 m, 22–23 Dec 1984 (fl), *J. Jaramillo 7434* (QCA). Estación Río Pizará, ENDESA, 0°13'N, 79°08'W, 450 m, 24 Feb 2006 (fr), *A. Pérez 2661* (QCA). Quito, Pacto Mashpishungo-Pambiliño, 0°11'N, 78°54'W, 632 m, 2 Apr 2015 (st), *G. Toasa, T. Rivas, E. Pinto, & B. Yunda 12728* (QCA). Esmeraldas: Cantón Quinindé, cordillera Mache Chindul, Bilsa Biological Station, 35 W of Quinindé, 5 km W of Santa Isabel, 0°21'N, 79°44'W, 500 m, 6 Feb 1996 (fl), *J.L. Clark, N. Kerber & J. Plihal 1945* (QCNE); ibidem, 14 Nov 1994 (fr), *J.L. Clark, H. Lintz & S. Mora 239* (QCNE);

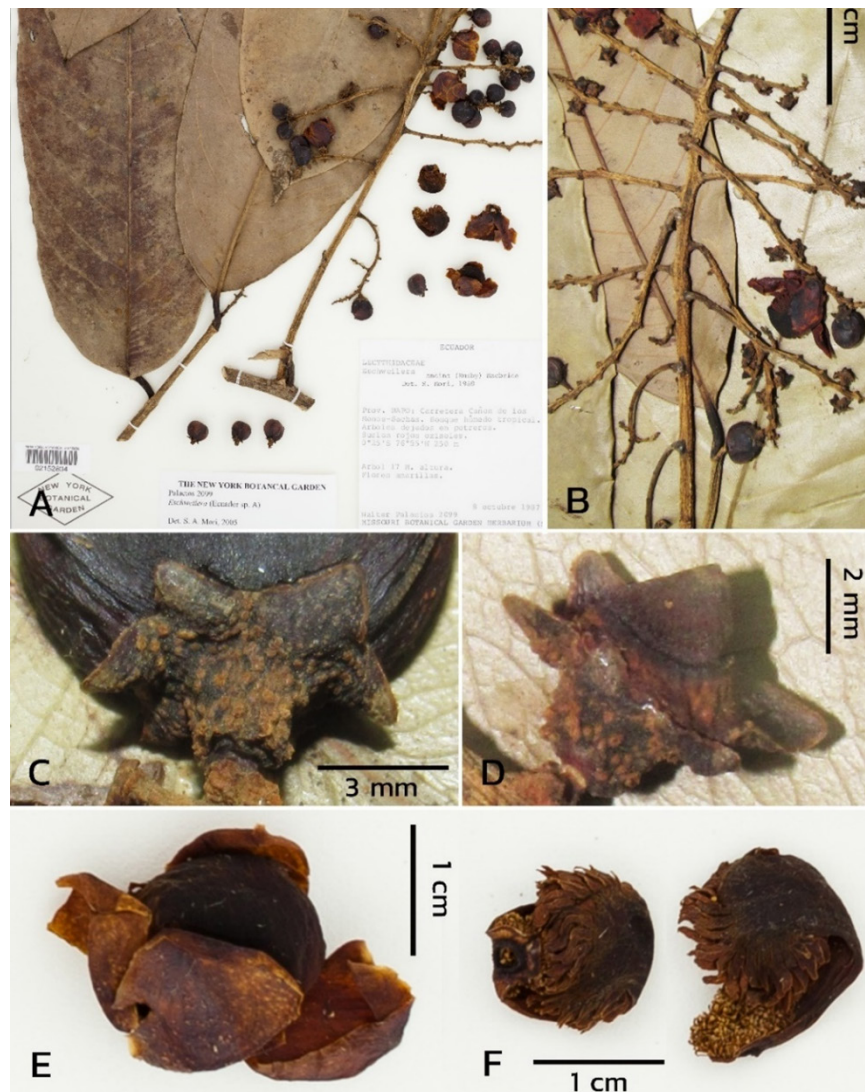


FIGURE 2: *Scottmoria felix-mangingii* Cornejo. A, Isotype from NY; B, paniculate inflorescence; C, valvate calyx lobes and verruculose-lenticellate pedicel-hypanthium zone; D, calyx at post-anthesis, the ovary summit conspicuously protruding over hypanthium, the style not distinguished from the summit of the ovary; E, flower showing petals; F, androecial hood showing staminal ring, ligule and staminodes. The isotype, *Palacios 2099* (NY). A, courtesy of The New York Botanical Garden. B-F, photographs by X. Cornejo.

ibidem, 0°20'N, 79°43'W, 500–600 m, 25 Sep 2006 (fl), A. Pérez, G. Buitrón & W. Santillán 2886 (QCA); ibidem, sendero Naranja, 400 m N from Bilsa, 12 Dec 2007 (fr), C. Cerón, C. Reyes, D. Cabrera, J. Olivo, F. Castillo, P. Mena, L. Carrasco, R. Espinoza, C. Aulestia, J. Berningham & R. Manobanda 61369 (QAP); sendero Verde, tagged tree C 101 No. 32, 0°21'N, 79°44'W, 500 m, 16 Oct 2009 (y fl, fr), X. Cornejo & C. Aulestia 8167 (GUAY, NY). Reserva Ecológica Mache Chindul, comunidad Caña Braval, cabeceras de Río Viche, estero Sabaleta, 0°215'N, 79°45'W, 250 m, 16 Mar 1998 (fl), J.L. Clark 4684 (QCNE). Fila de Bilsa, 7 km E of San José de Bilsa, 0°37'N, 79°51'W, 280 m, 29 Jan 2021 (fl), A.H. Gentry & C. Josse 72851 (QCNE). Carretera Herrera-El Páramo (Sta. Isabel),

Estación Biológica Bilsa, 0°21'36,7"N, 79°42'40.4"W, 580 m, 18 Feb–5 Mar 1995 (fl, fr), W. Palacios, J.L. Clark, N. Jaramillo 13567 (QCNE); ibidem, 2–4 Mar 1995 (y fl), W. Palacios 13713 (QCNE). Cristóbal Colón, 14 Jul 2009 (fl), W. Palacios 16847 (QCNE). Parroquia Alto Tambo, sector El Cristal, 0°50'N, 78°30'W, 600 m, 13 Apr 1992 (fl), G. Tipaz, C. Quelal & A. Grijalva 787 (QCNE). Cristal, Km 12 Lita to Buenos Aires, off road from Lita to San Lorenzo, 1400 m, 20 Jul 1988 (fl), C.H. Dodson & A.H. Gentry 17625 (NY, QCNE). Lita-San Lorenzo road, 10–20 km NW of Lita, 0°55'N, 78°35'W, 800 m, 12 May 1991 (fl, fr), A.H. Gentry, C.H. Dodson, B. Boyle & D. Rubio 70122 (QCNE). Los Ríos: Hacienda Clementina, Bosque Protector Samama-Guineales-Mumbes, cerro Samana, 600

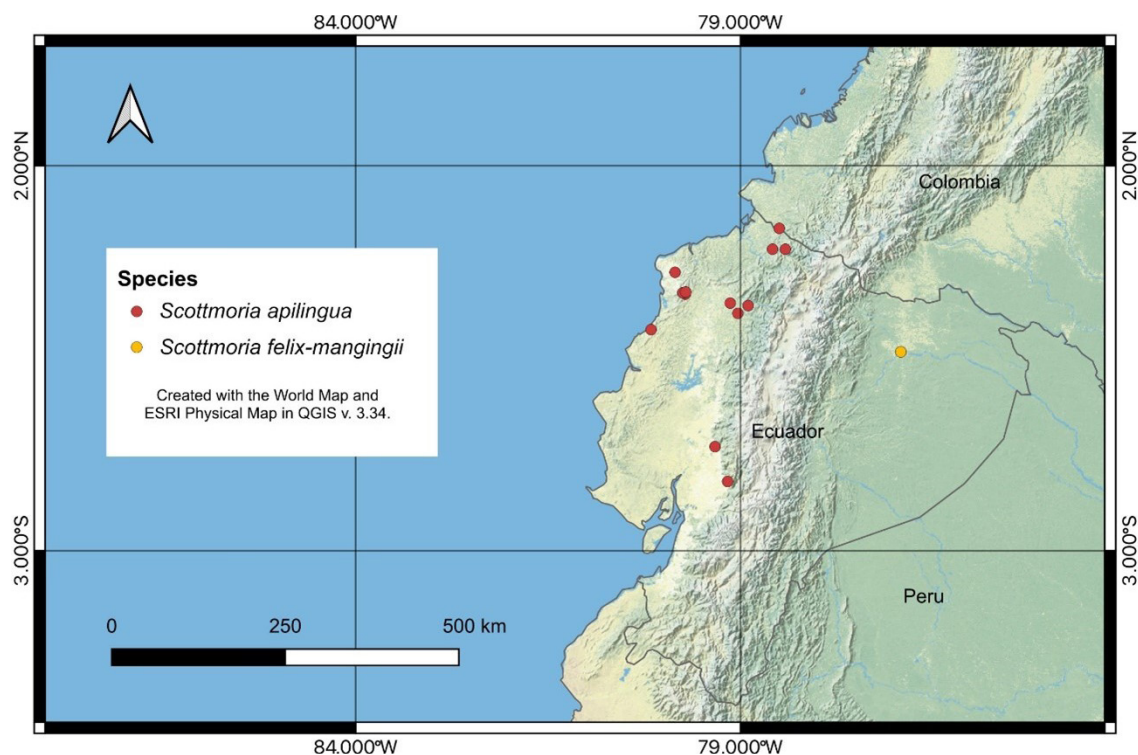


FIGURE 3: Distribution map of *Scottmoria apilingua* and *Scottmoria felix-mangingii* in Ecuador.

m, 19 Mar 2010 (fr), *X. Cornejo 8185* (GUAY, NY); ibidem, 1°38'51"S, 79°19'52"W, 382–750 m, 21–27 Nov 2016 (fl), *E. Freire 11917* (QCNE). Manabí: 28 km S of Pedernales (as the crow flies), 3.5 km SW of the town of Camarones, off trail northwest of Pertextaxto Gutierrez' house, 0°07'40"S, 80°09'42"W, 500–550 m, 27 Nov 1999 (fr), *T. Delinks 489* (QCNE). El Carmen, 2 km south of El Mono (N 38 road), fragment of well conserved lowland rainforest, 0°22'S, 79°42'W, 299 m, 8 Jun 2021 (fl), *T.L.P. Couvreur, A. Looz & N. Zapata 1407* (QCA, WAG-L). Bolívar: Hda. Changuil, sector Agua Clara, 2°06'S, 79°10'W, 400 m, Sep 1995 (fr), *C. Bonifaz & X. Cornejo 3325* (GUAY). Cañar: Este de Manta Real, 2°33'S, 79°20'W, 500–700 m, 17 Dec 1994 (fl), *X. Cornejo 3724* (AAU, GUAY, K, NY). Manta Real, 2°34'41"S, 79°20'03"W, 860 m, *H. Vargas & W. Defas 5733* (MO, NY, QCNE).

2. *Scottmoria felix-mangingii* Cornejo, *sp. nov.* TYPE: ECUADOR. Napo: carretera Cañón de Los Monos-Sacha, bosque húmedo tropical, árboles dejados en potrero, suelos rojos oxisoles, 0°25'S 76°55'W, 250 m, 8 Oct 1987 (fl), *W. Palacios 2099* (Holotype: QCA-54491! (barcode); Isotypes: NY-2152804! (barcode), QCNE-28240!, US-3287084!). Fig. 2, 3.

New species of *Scottmoria*, similar to *S. ovalifolia* (DC.) Cornejo (2024, p. 174; Vargas et al., 2024); however, *S. felix-mangingii* differs by the larger leaf blades (34–45 vs. 14–30 cm long), flowers with an androecial hood without

a ligular sulcus (vs. androecial hood with a ligular sulcus), a calyx valvate, and the sepal lobes triangular (vs. calyx imbricate, the sepal lobes deltoid to suborbicular).

Tree ca. 17 m tall and ca. 20 cm DBH, the bark and trunk unknown. *Stems* glabrous, lenticellate, the lenticels circular to elliptic. *Leaves* petiolate, the petioles shallowly channeled adaxially, rounded abaxially, hemispherical in cross section, ca. 12–20 mm long × 3–4 mm diam., glabrous; blades oblong-elliptic to narrowly-elliptic, 34–45 × 10–14 cm, thinly chartaceous, with abundant black punctations abaxially, the base broadly cuneate to broadly obtuse or rounded, revolute, the margins entire to sinuate, marginal glands present in young leaves, becoming inconspicuous dark brown dots in mature leaves, the apex rounded to shortly acuminate, the acumen 0.7–1.5 cm; venation eucamptodromous toward the base and brochidodromous toward the apex, the midrib sulcate adaxially, salient abaxially, glabrous, the secondary veins in 14–22 pairs, impressed to prominulous adaxially, salient abaxially, the tertiary veins reticulate. *Inflorescences* axillary and (sub)terminal, a panicle on leafy branches, the rachis 12–30 cm long × 3–7 mm thick in the lower half, straight to slightly flexuose, lenticellate, glabrous; pedicel/hypanthium 3–5 × 2.5–5 mm, richly verruculose-lenticellate, glabrous, blackish (dry); floral bracts not seen even in buds; flower buds yellow (fresh). *Flowers* 3–4 cm diam. (fresh), ca. 2.5–3 cm diam. (dry); calyx with six lobes, the lobes triangular, 2–3 × 1.5–2.5 mm, broadly divergent

to patent at anthesis, verruculose-lenticellate abaxially, the margins entire, the bases valvate, arising from fused calyx rim; petals obovate to broadly ovate, 1.5–2 × 0.8–1.3 cm, yellow; androecial hood with three coils, ca. 1.3–1.5 cm across, yellow (fresh), inner cleft present; vestigial stamens on the outside of the coils; staminal ring with ca. 120 stamens, the filaments ca. 0.5–1 mm long (fresh), clavate, the anthers ca. 0.3 mm long (fresh); hypanthium glabrous, verruculose-lenticellate, truncate at summit, forming a continuum onto pedicel at base, ca. 2 mm long; the ovary summit conspicuously protruding over hypanthium, ca. 2–3 mm high, surrounded by a shallow circular depression between the intra-staminal ring scar and summit of ovary; the style not distinguished from the summit of the ovary, stilar collar absent, the stigma pore subcircular. *Fruits* and seeds unknown.

Scottmoria felix-mangingii is easy to recognize by the combination of small flowers, subsessile to short pedicellate, with pedicel-hypanthium up to 5 mm long, a calyx valvate, corolla yellow, and an inconspicuous style with a subcircular stigma pore. The only other species with yellow corolla and similar large leaves in Amazonian Ecuador is *S. ovalifolia*; for differences, see the characters in the diagnosis. A second species with yellow corollas and androecial hood with a triple coil in Ecuador is *S. awaensis* (S. A. Mori & Cornejo) Cornejo (2024, p. 173; Vargas et al., 2024). However, *S. felix-mangingii* sharply differs from the latter species by the shorter leaf blades (up to 45 cm long vs. up to 81 cm long), lower number of lateral veins (14–22 pairs vs. 31–40 pairs), shorter flowers (3–4 cm in diam. vs. 6 cm in diam.), floral bracts not seen even in buds (vs. floral bracts conspicuous, 12 × 8 mm), smaller calyx lobes (2–3 × 1.5–2.5 mm vs. 7–13 × 6–12 mm), seeds with a testa smooth, without a rubbery coat (vs. seeds with a testa finely tuberculate surrounded by a white rubbery coat), and the distribution pattern, i.e., Amazonian lowlands (vs. northwestern Ecuador). At present, *Scottmoria felix-mangingii* is known only by the type collection gathered in 1987; since then, no further individuals have been found. The type specimens exhibit conspicuously different characters that preclude placement in any other known taxon and thus deserve formal recognition.

Etymology: The epithet honors Félix Manging, an Ecuadorian biologist of Chinese descent, director and curator at the Museum of Zoology (MZUG), Faculty of Natural Sciences, University of Guayaquil. During his 30-year career, Manging has been an admired professor of ornithology because of his deep knowledge of birds and ecosystems acquired from field experience in tropical Ecuador. Despite his introverted personality, he greatly contributed to the education of many biologists at the University of Guayaquil, provided advice to numerous

valuable conservation projects mainly in coastal Ecuador, and was always the man behind the scenes, avoiding public recognition. Therefore, now at his retirement, naming a species after him is a well-deserved distinction.

Common names: Unknown.

Habitat and distribution: Known only from the type locality. The landscape and type habitat have been heavily disturbed by selective timber extraction and conversion to cattle pastures with some scattered native trees remaining.

Phenology: Flowers have been observed in October.

Conservation status: At present, the status of populations of *Scottmoria felix-mangingii* is unknown. Due to the scarce information, the new species is here estimated as Data Deficient (DD; IUCN, 2022).

ACKNOWLEDGMENTS

Thanks to the QCA and QCNE herbaria and their staff, mainly Priscila Muriel, Mayra Nacimba (QCA), Marcia Peñafiel, Diana Fernández, and Efraín Freire (QCNE), who allowed the first author to study the specimens of Lecythydaceae of Ecuador. The type images of *Scottmoria felix-mangingii* reproduced in Fig. 2A, E, F were kindly provided by The New York Botanical Garden. Nathan Smith provided editorial corrections and prepared the distribution map of the new species presented here in Fig. 3. Kanchi Gandhi provided useful nomenclatural advice. Ghilleen T. Prance thanks the International Cosmos Prize for funding his research and The Royal Botanic Gardens Kew for access to the herbarium.

LITERATURE CITED

- BACHMAN, S. AND J. MOAT. 2012. GeoCAT—an open-source tool for rapid Red List assessments. *BGjournal* 9: 11–13.
- BATISTA, J. 2024. *Scottmoria tenuicaule* (Lecythydaceae), a new species with a new aril variation for the genus, from the tropical rainforest of the Caribbean slopes in Panama. *Harv. Pap. Bot.* 29: 245–252.
- CORNEJO, X. 2023a. *Eschweilera podoaquilae*: a new species of Lecythydaceae from northwestern Ecuador. *Phytotaxa* 579: 139–142.
- CORNEJO, X. 2023b. *Eschweilera brevipetiolata* and *E. silverstonei*: two new species of Lecythydaceae from western Colombia. *Phytotaxa* 585: 287–292.
- CORNEJO, X. AND G.T. PRANCE. 2024. Three new species of *Scottmoria* (Lecythydaceae) from northwestern South America. *Phytotaxa* 675: 59–68.
- CORNEJO, X. AND G.T. PRANCE. 2025. Two new species of *Scottmoria* (Lecythydaceae) from western Ecuador and six new combinations in the genus. *Phytotaxa* 696: 253–261.

- IUCN STANDARDS AND PETITIONS COMMITTEE. 2022. Guidelines for Using the IUCN Red List Categories and Criteria. Version 15. Prepared by the Standards and Petitions Committee. Downloadable from <http://www.iucnredlist.org/documents/RedListGuidelines.pdf> (accessed 1 June 2025).
- JACKSON, B. D. 1991. *A Glossary of Botanic Terms with Their Derivation and Accent*. 4th ed. Duckworth, London.
- MORI, S. A., N. P. SMITH, X. CORNEJO, AND G.T. PRANCE. 2015. The Lecythidaceae Pages. The New York Botanical Garden, Bronx, New York. Available from: <http://sweetgum.nybg.org/lp/index.php> (accessed 9 July 2022).
- THIERS, B. 2025. Index Herbariorum: A global directory of public herbaria and associated staff. New York Botanical Garden's Virtual Herbarium. Available at <http://sweetgum.nybg.org/ih/> (accessed 1 June 2025).
- VARGAS, O.M., D. A. LARSON, J. BATISTA, X. CORNEJO, B. GARCIA LUIZE, D. MEDELLÍN-ZABALA, M. RIBEIRO, N. P. SMITH, S. A. SMITH, A. VICENTINI, AND C.W. DICK. 2024. Reclassification of the *Bertholletia* clade of the Brazil nut family (Lecythidaceae) based on a phylogenetic analysis of plastome and target sequence capture data. *Harv. Pap. Bot.* 29: 159–179.